



Investment
Managers

Marketing Communication

Not for Retail distribution: this marketing communication is intended exclusively for Professional, Institutional or Wholesale Investors / Clients, as defined by applicable local laws and regulation. Circulation must be restricted accordingly.

AXA IM

Mexico ETF Offerings



Why AXA IM?

AXA Investment Managers has leveraged our decades of experience and outstanding existing portfolio management and research teams to create an ETF platform focused on active management and responsible investment with an attractive fee schedule¹ and access to future-focused solutions.

Our ETF platform merges the **extensive investment experience** of our multi-disciplined portfolio management teams with our dedicated in-house Capital Markets and Structured Asset Management teams' **ETF expertise**.

AXA IM's experience actively managing thematic and impact strategies, expertise in areas like sustainable equity, credit, and technology, and mindset for responsibly investing for the long term have led to in-house ETFs designed to meet investors' long-term needs. With AXA IM's ETFs, investors can more easily navigate the future of investing, taking advantage of opportunities ranging from climate change to the consumer digital revolution.

¹ Additional transaction fees might be applied by the financial intermediary.

AXA IM's ETF Listings in the Americas

Our ETF funds:

Whether investors want a core building block or a thematic allocation, AXA IM's ETFs offer versatile solutions that align with their investment objectives, easy access, high liquidity, and transparency. ETF funds include:

AXA IM NASDAQ 100 UCITS ETF USD Acc (ANAUN MU)

This ETF replicates the Nasdaq 100 Index®, investing in the 100 largest modern U.S. industrial and technology companies. Investors can access opportunities within the U.S. industrial and technology markets while enjoying increased transparency, higher liquidity, greater tax efficiency, and an annual TER of 0.14%.

AXA IM NASDAQ 100 UCITS ETF MXN(H) Acc (ANAMN MU)

Similarly, the peso-backed AXA IM Nasdaq-100® UCITS ETF passively replicates the Nasdaq 100 Index® and has an annual TER of 0.20%. Investors in Latin America can easily buy and sell this ETF to take advantage of the growth potential of the U.S.'s largest industrial and technology companies.

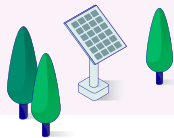
AXA IM MSCI USA Equity PAB UCITS ETF USD Acc (AIUUN MU)

This ETF replicates the MSCI USA Climate Paris Aligned Index®'s performance, net of management fees. Investors can invest in large and mid-cap companies listed on the U.S. equity markets that follow decarbonization trajectories consistent with the Paris Agreement's objectives. With a maximum total expense ratio (TER) of 0.13%, the AIUU ETF is a cost-efficient option.



AXA IM MSCI EUROPE EQUITY PAB UCITS ETF EUR Acc (AIMEN MU)

This ETF allows investors to easily access the growth potential of large- and mid-cap companies that are equipped with a climate transition strategy within the European equity market. Investors can enjoy high levels of transparency and liquidity as well as a TER of 0.14%



AXA IM MSCI World Equity PAB UCITS ETF USD Acc (AWDUN MF)

This passively managed ETF tracks the MSCI World Climate Paris Aligned Index®. For investors interested in capturing energy transition opportunities, it offers exposure to large- and mid-cap companies in global equity markets with a climate transition strategy. The AWDU ETF combines cost-efficiency, liquidity, and transparency for long-term growth opportunities.

AXA IM MSCI World Equity PAB UCITS ETF MXN (H) Acc (AWDMN MF)

This peso-backed, passively managed ETF tracks the MSCI World Climate Paris Aligned Index®. It provides Latin American investors with exposure to large and mid-cap companies with climate transition strategies across global equity markets. This ETF combines affordability, liquidity, and transparency, offering the potential for long-term growth.

AXA IM MSCI Emerging Markets Equity PAB UCITS ETF USD Acc (AIQUN MF)

This passively managed ETF tracks the ICE® Emerging Markets Corporate Plus Paris Aligned Absolute Emissions Index through a stratified sampling strategy. Following the Paris Aligned Benchmark (PAB), this EFT offers investors exposure to the potential of the emerging markets credits universe, with a goal of net zero carbon emissions by 2050.

AXA IM TREASURY +25 YEAR UCITS ETF MXN (H) Acc (ADLMx I2)

This passively managed ETF tracks the ICE® US Treasury 25+ Year Bond Index through a stratified sampling strategy. This ETF provides a simple solution for accessing the very liquid and high-quality debt of the US government.



AXA IM US TREASURY 0-1 YEAR UCITS ETF MXN (H) Acc (AOIMx I2)

This passively managed ETF tracks the ICE® BofA 0-1 Year US Treasury Index, less fees and expenses, through a simple solution for accessing the very liquid and high-quality debt of the US government.

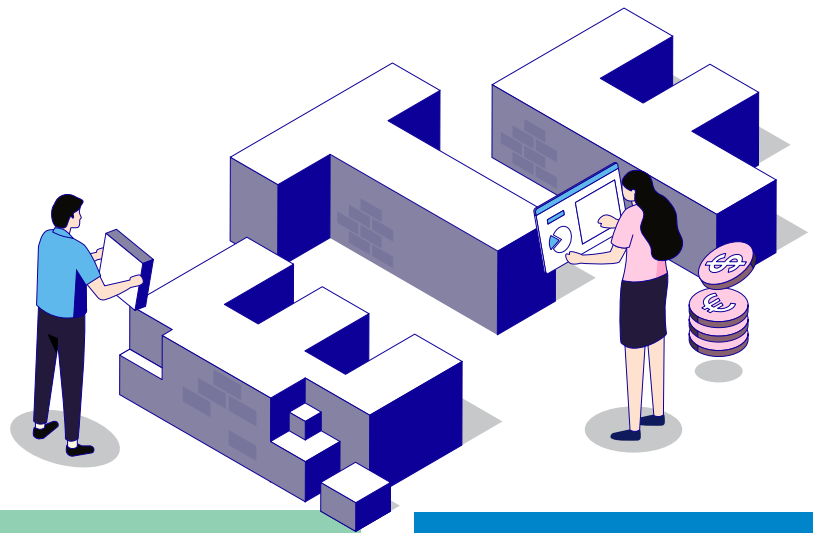


ETF Name	Ticker	ISIN	Shareclass	Trading Currency	Exchange	Ongoing Charges	AUM*	SFDR** Classification
EQUITIES - Passive Indexed Strategies								
AXA IM NASDAQ 100 UCITS ETF	ANAU GY	IE000QDFFK00	USD Acc	USD	Xetra	0.14%	USD 1,114M	Article 6
	ANAV GY			EUR	Xetra			
	ANAU IM			EUR	Borsa Italiana			
	ANAU SW			USD	SIX			
	ANAUN MU			MXN	BIVA			
	ANAE IM	IE000STJ19F2	EUR (H) Acc	EUR	Borsa Italiana	0.20%		
	ANAMx I2	IE000HN2PIB9	MXN (H) Acc	MXN	CBOE			
ANAMN MU	MXN			BIVA				
AXA IM MSCI USA Equity PAB UCITS ETF	AIUU GY	IE000AXIKJM8	USD Acc	USD	Xetra	0.13%	USD 57M	Article 8
	AIUT GY			EUR	Xetra			
	AIUU IM			EUR	Borsa Italiana			
	AIUU SW			USD	SIX			
	AIUUN MU			MXN	BIVA			
AXA IM MSCI Europe Equity PAB UCITS ETF	AIME GY	IE000YASIPS3	EUR Acc	EUR	Xetra	0.14%	USD 131M	Article 8
	AIME IM			EUR	Borsa Italiana			
	AIME SW			EUR	SIX			
	AIMEN MU			MXN	BIVA			
AXA IM MSCI World Equity PAB UCITS ETF	AWDU GY	IE000SU7USQ3	USD Acc	USD	Xetra	0.20%	USD 202M	Article 8
	AWDT GY			EUR	Xetra			
	AWDU IM			EUR	Borsa Italiana			
	AWDU SW			USD	SIX			
	AWDUN MF	MXN	BMV					
	AWSU GY	IE000WZU35H0	USD Dist	USD	Xetra	0.23%		
	AWST GY			EUR	Xetra			
	AWDE GY	IE000TT7HZ88	EUR (H) Acc	EUR	Xetra			
AWDE IM	EUR			Borsa Italiana				
AWDMx I2	IE000VHUWPB7	MXN (H) Acc	MXN	CBOE				
AWDMN MF			MXN	BMV				
AXA IM MSCI Emerging Markets Equity PAB UCITS ETF	AIQU GY	IE000GLIXPP3	USD Acc	USD	Xetra	0.24%	USD 30M	Article 8
	AIQT GY			EUR	Xetra			
	AIQU IM			EUR	Borsa Italiana			
	AIQU SW			USD	SIX			
	AIQUN MF			MXN	BMV			
FIXED INCOME - Passive Strategies								
AXA IM US Treasury 25+ Year UCITS ETF	ADLU GY	IE000GBYNAU4	USD Acc	USD	Xetra	0.07%	USD 10M	Article 6
	ADLT GY			EUR	Xetra			
	ADLU IM			EUR	Borsa Italiana			
	ADLU SW			USD	SIX			
	ADLUN MF			USD	BMV			
	A2DU GY			IE000WPH0239	USD Dist			
A2DT GY	EUR	Xetra						
ADLMx I2	IE000BBMJ8L9	MXN (H) Acc	MXN	BMV	0.10%			
AXA IM US Treasury 0-1 Year UCITS ETF	A01U GY	IE00087GRUR0	USD Acc	USD	Xetra	0.07%	USD 13M	Article 6
	A01T GY			EUR	Xetra			
	A01U IM			EUR	Borsa Italiana			
	A01U SW			USD	SIX			
	A01UN MF			USD	BMV			
	A0DU GY	IE000PO34ON2	USD Dist	USD	Xetra			
	A0DT GY			EUR	Xetra			
A01Mx I2	IE000GY4RHX5	MXN (H) Acc	MXN	BMV	0.10%			

*SFDR: Sustainable Financial Disclosure Regulation. The product categorization is provided based on the basis of the European Directive (EU) 2019/2088 on sustainability-related disclosures in the financial services sector ("SFDR Regulation") and on the basis of knowledge at the time of the creation of this document. More information available in the end disclaimer. The targeting of specific SDG does not imply the endorsement of the United Nations of AXA Investment Managers, its products or services, or of its planned activities and does not constitute, explicitly or implicitly, a recommendation for an investment strategy.

What you get when you choose AXA IM

Our ETFs may be new, but we're not. AXA IM has successfully managed listed and unlisted assets through 30+ market cycles.



20
+ years
Extensive credit
experience

26
years
Managing responsible
investments

30+
Market cycles
weathered

The value of investments, and the income from them, can fall and investors may not get back the amount originally invested.

**For more information,
please reach out to**

Salvador Moreno

Director de AXA IM México
Director de Institucional, Latam
AXA Investment Managers México

Salvador.Moreno@axa-im.com
+52 55 7101 0513



Our Authorised Participants (APs)

BNP PARIBAS ARBITRAGE SNC
dl.europe.execution.prem.flow@bnpparibas.com
+44 (0) 20 75 95 11 50
+351 (0) 21 05 11 703

HSBC BANK PLC
etftradingdesk@hsbcib.com
+44 (0) 20 7991 5016
+44 (0) 20 7991 5711

GOLDENBERG HEHMEYER LLP
Mm@ghco.co.uk
+44 (0) 20 7390 3301S

JANE STREET FINANCIAL LIMITED
europesales@janestreet.com
+44 (0) 20 3787 3333

RISK OF LOSS: Investors may lose part of or entirely the invested capital depending on market conditions.

INTEREST RATE RISK: This corresponds to the risk of depreciation in rate-based instruments over either the short or medium term stemming from interest rate variations. For purposes of illustration, the price of a fixed-rate bond tends to decrease as interest rates increase. The Fund is particularly exposed to bonds and other debt securities; in the event of a rise in interest rates, the value of assets invested at a fixed rate may fall.

CREDIT RISK: In the event of default or deterioration of the quality of private bond issuers (for example, a reduction in rating), the value of debt securities in which the Fund is invested may fall. In such case, the Net Asset Value of the Fund may fall.

DERIVATIVES RISK AND LEVERAGE: The Funds may use both listed and OTC derivatives for investment or hedging purposes. These instruments are volatile and may be subject to various types of risks, including but not limited to market risk, liquidity risk, credit risk, counterparty risk, legal risk and operations risks. In addition, the use of derivatives can involve significant economic leverage and may, in some cases, involve significant risks of loss. Furthermore, investments in OTC derivatives may have limited secondary markets liquidity and it may be difficult to assess the value of such a position and its exposure to risk. For these reasons, there can be no guarantee that strategies using derivatives instruments will meet their expected target.

COUNTERPARTY RISK: This is the risk of default (or counterparty's failure to perform any of its obligations) of any counterparties of the Fund to any OTC financial derivatives transactions. The counterparty's default (or the counterparty's failure to perform any of its obligations) under these transactions may have a material adverse effect on the Net Asset Value of the Fund.

EQUITY RISK: The value of shares in which a Fund invests fluctuate pursuant to market expectations. The value of such shares will go up and down and equity markets have historically been more volatile than fixed interest markets. Should the price of shares in which the Fund has invested fall, the Net Asset Value of the Fund will also fall. Funds investing in shares are generally more volatile than funds investing in bonds or a combination of shares and bonds, but may also achieve greater returns.

CAPITAL LOSS: An investment in a Fund involves investment risks, including possible loss of the amount invested. Investors may lose part of or entirely the invested capital depending on market conditions.

IMPACT OF ANY TECHNIQUES SUCH AS DERIVATIVES: Certain management strategies involve specific risks, such as liquidity risk, credit risk, counterparty risk, legal risk, valuation risk, operational risk and risks related to the underlying assets. The use of such strategies may also involve leverage, which may increase the effect of market movements on the Fund and may result in significant risk of losses.

SUSTAINABILITY RISKS: The Fund does not integrate sustainability risks. Taking into account the investment objective and strategy of the Fund, the Investment Manager does not consider the principal adverse impacts in its investment decisions since it does not intend to promote environmental or social characteristics nor to have a sustainable investment objective. In addition, the principal adverse impacts are not considered as the Fund's strategy consists in tracking its reference Index. Given the investment strategy of the Fund and its risk profile, the likely impact of sustainability risks on the Fund's returns is expected to be low.

INDEX TRACKING RISK: There is no guarantee that the Fund will achieve perfect tracking and it may potentially be subject to tracking error risk, which is the risk that its returns may not track exactly those of its Index, from time to time.

The list above of risk factors is not exhaustive. Please refer to the prospectus and prospectus supplement for full product details and complete information on the risks.

Disclaimer

This document has been issued by AXA IM Mexico, S.A. de C.V., («AXA IM Mexico»). The information contained herein is consistent with the provisions contained in Article 6 of the Securities Market Law, in accordance with the provisions of Article 226, Section VIII of the same legal system.

This document and the information contained herein are intended for the exclusive use of sophisticated clients or institutional and/or qualified investors and should not be directed toward retail clients or individual investors. It has been prepared and published for informational purposes only at the exclusive request of the specified recipients and not intended for general circulation to the investing public. It is strictly confidential and must not be reproduced, distributed, circulated, redistributed or otherwise used, in whole or in part, in any way without the prior written consent of AXA IM Mexico. It is not intended for distribution to any person or jurisdiction for which it is prohibited.

To the fullest extent permitted by law, AXA IM Mexico does not warrant the accuracy or adequacy of any information contained herein and assumes no liability for errors or misstatements, whether due to negligence or any other reason. Such information may be subject to change without notice. The data contained herein, including but not limited to any backtesting, simulated performance history, scenario analysis, and investment instructions, are based on a number of key assumptions and inputs and are presented for indicative and/or illustrative purposes only.

This document has been prepared without regard to the specific personal circumstances, investment objectives, financial situation or particular needs of any particular person. Nothing contained herein shall constitute an offer to enter or a term or condition of any deal, transaction, contract or agreement with the recipient thereof or with any other party. This document shall not be construed as investment advice, tax or legal advice, or an offer to sell or solicitation to invest in a particular fund. If you are unsure of the meaning of any information contained herein, please consult your financial advisor or other professional advisor. The data, projections, forecasts, forecasts, assumptions and/or opinions expressed herein are subjective and are not necessarily used or followed by AXA IM Mexico or its affiliated companies which may act on their own opinions and as independent areas within the organization.

All investment activity involves risks. You should be aware that investments can increase or decrease in value and that past performance is not a guarantee of future returns, you may not receive the amount initially invested. Investors should not make any investment decisions based solely on this material.

If any fund is particularly highlighted in this communication (the «Fund»), its offering document, investment prospectus or key information document contains important information about sales restrictions and risk factors, you should read them carefully before entering into any transaction. It is your responsibility to be aware of and observe all applicable laws and regulations of any relevant jurisdiction. AXA IM Mexico does not intend to offer any Fund in any country where such an offering is prohibited.

To understand the full extent of the associated risks, please read the fund's prospectus and/or key information prospectus carefully.

AXA IM Mexico, S.A. de C.V., is prohibited from guaranteeing returns to its clients on their investments, as well as from receiving money or securities from its clients in deposit or custody.

AXA IM Mexico does not receive remuneration from issuers or related persons for the promotion of securities, or from intermediaries in the national or foreign securities market.

© 2025 AXA Investment Managers US Inc. All rights reserved.